

GALE LITERARY SOURCES

Create a clear path for research success. *Gale Literary Sources* brings together our well-known and trusted literary databases into a single digital space. By unifying your Gale literary databases in this cross-searchable environment, you are providing a more comprehensive view of the literary landscape to ensure that both students and faculty receive the most refined results in support of their research.

BIOGRAPHICAL

DICTIONARY OF LITERARY BIOGRAPHY



Traces the development of canonical authors' literary contributions and reputations through signed essays and biographical records from today's most discerning scholars. Authors are viewed within the context of their peers, providing closer focus when defining their place in literature.

SOMETHING ABOUT THE AUTHOR



Examines the lives and works of young adult and children's authors and illustrators. As the preeminent source for information on authors and literature for young people, this resource brings unique levels of detail that describe personal lives and careers.

PRIMARY SOURCES

LITFINDER



Includes thousands of original works, such as short stories, poems, plays, novels, speeches, and essays by noted literary, historical, and culturally significant figures as well as new or emerging authors.

CONTEXTUAL REFERENCE

eBOOKS ON GVRL



Gale's literary eBook collections provide focused points of entry to any number of literary topics, but can also be included in our cross-search environment, adding even greater detail and focus to already robust search results.

MODERN LANGUAGE ASSOCIATION (MLA) INTERNATIONAL BIBLIOGRAPHY



A key starting point for literary research, this resource provides a scholarly bibliography that can either be used on its own or as a component of *Gale Literary Sources*. Includes full-text results when cross searching with Gale's *Literature Resource Center* or *Dictionary of Literary Biography*.

SCRIBNER WRITERS ON GVRL



Jay Parini, managing editor, brings together signed scholarly essays from around the academic world in this ongoing series that provides biographical detail and broad analysis of authors, their careers, and their impact on the societies and eras in which they live or lived.

TWAYNE'S AUTHORS ON GVRL



This closed set of scholarly monographs support an advanced level of literary criticism to help students gain an understanding of writers' lives, works, and ideas. While scholarly in nature, they are written in an approachable voice for the benefit of a broad range of readers.

CRITICISM

LITERATURE CRITICISM ONLINE



Supports the study of humanities at large with the most extensive curated compilation of literary criticism available. Will help to drive critical thinking through modern and historical views on authors and their works across time, region, and genre.

LITERATURE RESOURCE CENTER (LRC)



Provides a comprehensive collection of peer-reviewed journals, reviews and criticism, contextual reference, and primary texts. This is a go-to resource for both foundational and advanced information on all things literary.

Gale Literary Sources

RAISE THE LEVEL OF LITERARY RESEARCH



**LEARN
MORE**

888.728.9422
gale.com/gls



EMPOWER™ INSIGHT

DISCOVER NEW CONNECTIONS

WORKFLOW TOOLS

Changing the way researchers discover with integrated workflow tools and search capabilities. Help users explore and analyze content in entirely new ways with these tools.

SUBJECT INDEXING

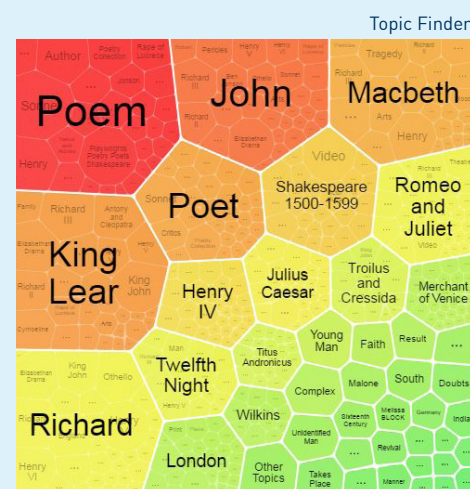
Aids content discovery across collections, drawing connections that simple search and retrieve cannot achieve—revealing related concepts and terms.

TERM FREQUENCY

Allows users to see the frequency of their search terms over time, which can suggest the importance of concepts during given periods.

TOPIC FINDER

Guides users to see topics that commonly occur in relation to their search terms, which helps uncover hidden connections and/or suggests potential pathways through a topic.

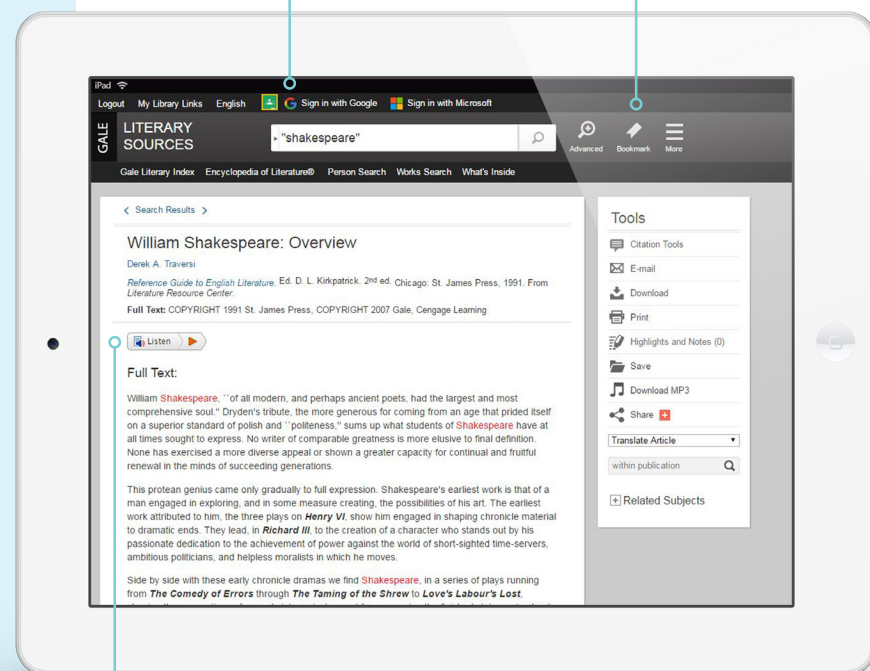


COLLABORATION TOOLS

Extend the reach of your resources. Integrated **G Suite for Education** and **Microsoft Office 365** tools enable users to easily share, save, and download content—including highlights and notes.

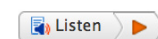
SHAREABLE BOOKMARKS

Bookmark URLs allow faculty to incorporate materials into the students' workflow. They can be used in Learning Management Systems or in course syllabi to guide students to supplemental course materials.



READSPEAKER TEXT-TO-SPEECH TECHNOLOGY

Make resources more accessible. Audio files can be downloaded and saved onto any mobile device.



CITATION TOOLS

Integrated directly into the users' workflow, formatted citations can be easily exported from single or multiple documents to services like EasyBib or NoodleTools. MLA, APA, and Chicago-style citations are supported.

Tools

- Citation Tools
- E-mail
- Download
- Print
- Highlights and Notes (0)
- Save
- Download MP3
- Share
- Translate Article
- within publication
- all volumes
- within this volume
- Related Subjects

ARTICLE AND INTERFACE-LEVEL TRANSLATIONS

Content can be translated into over a dozen languages—on screen and read aloud.

GALE LITERARY SOURCES PLATFORM

Gale Literary Sources brings together all of Gale's literary databases and literature eBook titles on *GVRL* into one seamlessly cross-searchable research and study environment. Whether your users are researching authors and their works, literary movements, or trying to find book reviews of bestsellers, they can access full-text literary works, journal articles, literature criticism and analysis, reviews, author biographies, and a rich collection of scholarly overviews.

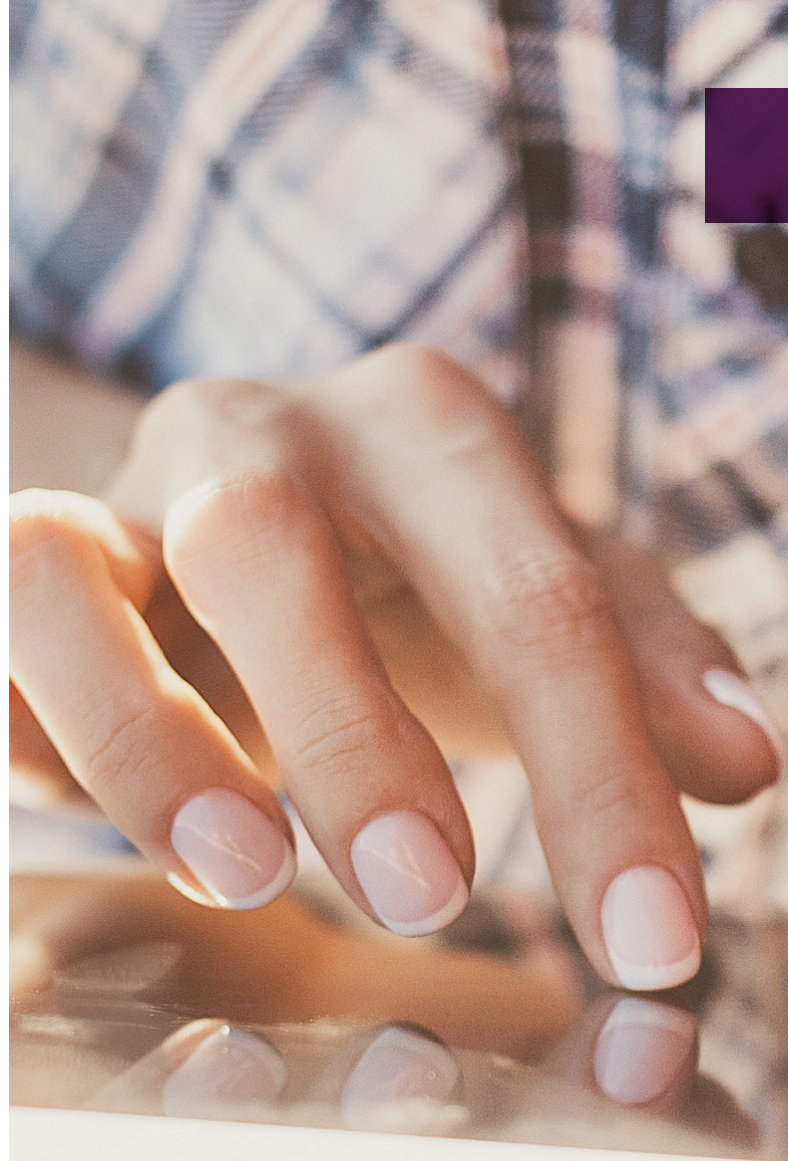
EXPLORE THE COLLECTIONS

A STORIED HISTORY OF LITERATURE

Gale's extensive online literary publishing program is built on over 50 years of continuous content creation and a 200 person-strong team of editors and researchers. Dating back to 1954, a time when the print world was thriving, the need for access to a broad range of critical analysis was growing. Our founder, Fred Ruffner, sought to expand Gale's offerings to support this need in academic libraries. On the heels of its early success in directory publishing, Gale expanded into other subject areas. In the late 1970s, Gale began developing its storied literature program. This led to the creation of many biographical and critical series that now include *Contemporary Authors*, the *Dictionary of Literary Biography Complete Online*, and Gale's *Literature Criticism* series. Since its inception, Gale's literature program has focused on providing rich historical and cultural commentary—previously relegated to on-site examination in archival collections and academic research institutions—to everyday researchers.

As libraries rapidly evolve in the digital space, so does Gale's literature program. The 2015 release of *Gale Literary Sources* provides researchers with a consolidated research experience. The addition of new features, such as the integration of G Suite for Education and Microsoft Office 365 and commonly used citation tools, help Gale embrace new technologies that support the researcher's evolving workflow.

Gale Literary Sources is an unmatched research experience. Researchers at any level can find a starting point, search across a wide variety of materials and points in time, and discover new ways to analyze information. We invite you to explore the collection and learn how *Gale Literary Sources* can raise the level of research at your institution.



DICTIONARY OF LITERARY BIOGRAPHY COMPLETE ONLINE

Presents a scholarly lens into the lives and works of the most influential literary figures through biographical and critical essays. Comprised of more than 420 volumes and over 164,000 pages, this collection makes it easy to search and retrieve essential information. This collection is often the biography of record for many international authors.

LITFINDER

Provides access to literary works and secondary-source materials covering world literature and authors throughout history. Includes more than 150,000 full-text literary works and over 800,000 poetry citations as well as short stories, speeches, and plays. Researchers can easily target the information they are looking for with refined search options.

MODERN LANGUAGE ASSOCIATION INTERNATIONAL BIBLIOGRAPHY

Indexes books, articles, and dissertations published on modern languages, literature, folklore, and linguistics from 1926 to the present. This collection includes the *MLA Thesaurus* and *MLA Directory of Periodicals*, which lists detailed information on over 6,000 journal titles, plus over 9,000 titles indexed in the bibliography.

SOMETHING ABOUT THE AUTHOR ONLINE

Examines the lives and works of authors and illustrators for children and young adults. This critically acclaimed series has more than 28,000 entries that include award-winning and emerging artists, and provides illustrated biographical profiles of approximately 75 children's authors and illustrators per volume.

LITERATURE CRITICISM ONLINE

Take literature, history, and culture to the next level with the largest, most extensive compilation of literary commentary available. Access centuries of analysis with scholarly and popular commentary from broadsheets, pamphlets, encyclopedias, books, periodicals, and tens of thousands of hard-to-find essays.

Representing a range of modern and historical views on authors and their works, this award-winning collection brings together the **10 most acclaimed literary series from Gale:**

Children's Literature Review
Classical and Medieval Literature Criticism
Contemporary Literary Criticism
Drama Criticism
Literature Criticism from 1400 to 1800

Nineteenth-Century Literature Criticism
Poetry Criticism
Shakespearean Criticism
Short Story Criticism
Twentieth-Century Literature Criticism

"This product has many different faces to keep both staff and students happy with their search results. Students from junior to high school would benefit. Instead of purchasing various print volumes yearly, the database covers several of the Gale literary criticism products. Recommended."

—Library Media Connection



TURN RESEARCH INTO RESULTS

LITERATURE RESOURCE CENTER

Offers trusted and authoritative information covering a broad and representative range of authors and their works, including full-text critical and literary analysis on more than 160,000 authors from around the world and throughout all time periods. Content is current, comprehensive, and reliable to support interdisciplinary approaches to the humanities and nurturing critical thinking skills.

STUDENTS & RESEARCHERS GAIN INSTANT ACCESS TO:

- Two award-winning series, *Contemporary Authors* and *Dictionary of Literary Biography*, with more than 160,000 complete entries that include in-depth biographical, bibliographical, and contextual information on authors' lives and works.
- Literary analysis and commentary, biographies, topic and work overviews, reviews, news, primary sources, images, links to audio and interviews, and more.
- The ability to cross search complementary content, including *Literature Criticism Online*, *Modern Language Association International Bibliography*, Gale eBooks on *GVRL*, and more.

GALE EBOOKS ON GVRL

Amplify researchers' focus on authors, trends, events, and topics by cross searching with all literature collections, including titles available on *GVRL*. Optimized for search, discovery, and integration across your school or library's educational programs, Gale eBooks on *GVRL* connects users to the most authoritative resources available—and a shorter pathway to get to them.

SCRIBNER WRITERS ON GVRL

Search original, scholar signed essays on the lives and works of authors from around the world and across all time periods. Entries include concise essays, citations, and biographical information that places authors and their works in personal and historical context.

Titles are available as subscriptions or eBook purchases.



American Writers: Supplement XXVI, 26th Ed. Vol. 30 | ISBN: 9780684325071

This collection of critical and biographical articles covers hundreds of notable authors from the 17th century to the present day.



British Writers: Supplement XXII, 22nd. Ed. Vol. 27 | ISBN: 9780684325095

This collection of critical essays examines hundreds of writers who have made significant contributions to British, Irish, and Commonwealth literature from the 14th century to the present day.



Scribner Writers Online: European Writers Collection Vol. 14 | ISBN: 9780684316871

This collection includes the 14-volume *European Writers* set, which is split into major time periods containing more than 250 of the most notable figures in world literature.

TWAYNE'S AUTHORS ON GVRL

This collection* is devoted to offering in-depth critical introductions to the lives and works of the world's most studied authors. It provides insightful and original commentary on the history and influence of literary movements.



Twayne's Authors Online: English Authors Series Classics Vol. 189 | ISBN: 9780805739299

"This title belongs in every library that supports research in American authors and literature."

-Electronic Resources Review

Twayne's Authors Online: Masterworks Series Vol. 112 | ISBN: 9780805739305

Twayne's Authors Online: Short Fiction Series Vol. 50 | ISBN: 9780805739312

Twayne's Authors Online: U.S. Authors Series Classics Vol. 199 | ISBN: 9780805739275

Twayne's Authors Online: U.S. Authors, World Authors and British Authors - Updated Edition Vol. 114 | ISBN: 9780805739329

Twayne's Authors Online: World Authors Series Classics Vol. 196 | ISBN: 9780805739282

**This collection is a closed set. Although no new content will be published, this is a seminal part of the Gale Literary Sources collection and will continue to play a significant role in literary analysis.*



PROVIDE A PATH TO LITERARY DISCOVERY

Let's talk about it. Call 888.728.9422